

Silver Spur cemetery

28°49'42"S 151°14'4"E

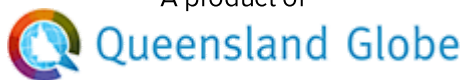
28°49'42"S 151°17'55"E



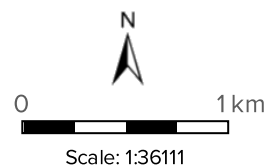
28°53'5"S 151°14'4"E

28°53'5"S 151°17'55"E

A product of



Legend located on next page



Printed at: A4

Print date: 30/8/2020

Datum: Geocentric Datum of Australia 1994
Projection: Web Mercator EPSG 102100

For more information, visit
<https://qldglobe.information.qld.gov.au/help-info/Contact-us.html>



**Queensland
Government**

Department of Natural Resources, Mines and Energy

Includes material © State of Queensland 2020.
You are responsible for ensuring that the map is
suitable for your purposes. The State of
Queensland makes no representation or
warranties in relation to the map contents and
disclaims all liability.

Imagery includes material © CNES reproduced
under license from Airbus DS, all rights reserved ©
21AT © Earth-i, all rights reserved, 2019

Silver Spur cemetery

Legend

Attribution

Coastline



Lake



Reservoir



Canal line



Canal area



Watercourse line

- Major Watercourse
- Minor Watercourse
- Major Culvert
- Minor Culvert

Watercourse area



Water area edge



Locality



Primary state schools



Junior secondary state schools



Senior secondary state schools



Miscellaneous secondary state schools



Special state schools



Non-government schools



Land parcel - gt 1 ha



Road

- Highway
- Main
- Local
- Private

Cities and Towns



Maxar

Includes material © The State of Queensland, © 21AT © Earth-i, all rights reserved, 2020

© State of Queensland (Department of Natural Resources, Mines and Energy) 2018

© State of Queensland (Department of Natural Resources, Mines and Energy) 2019

© State of Queensland (Department of Natural Resources, Mines and Energy) 2020

© State of Queensland (Department of Natural Resources and Mines), 2016

© State of Queensland (Department of Education and Training), 2018. © The State of Queensland (Non-State Schools Accreditation Board), 2018.

Silver Spur cemetery

 Legend

Railway

